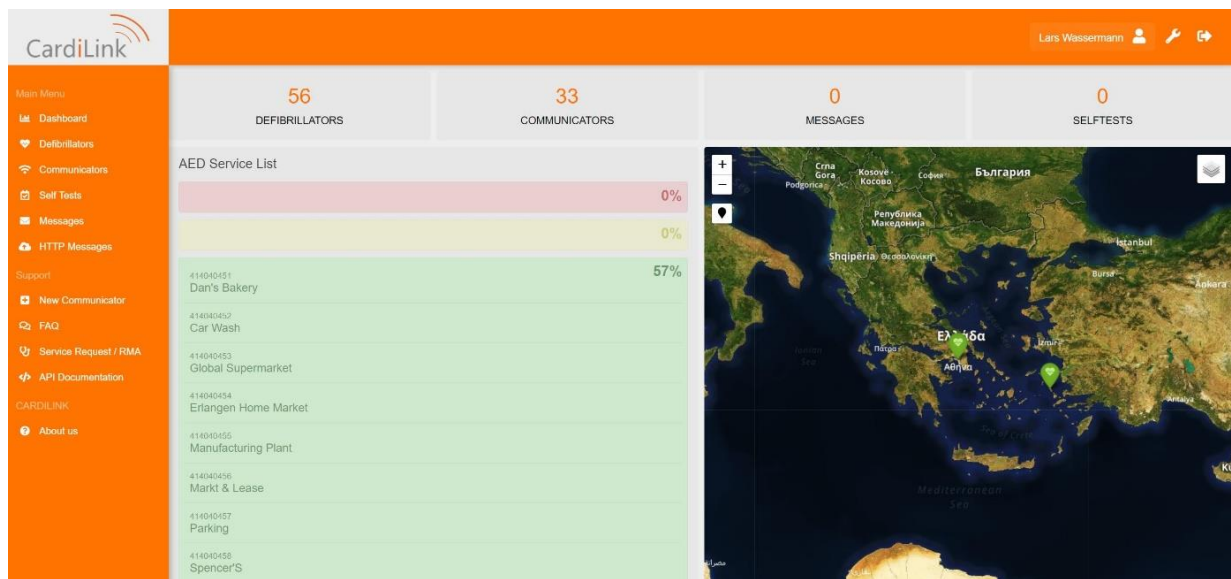


CardiLink®

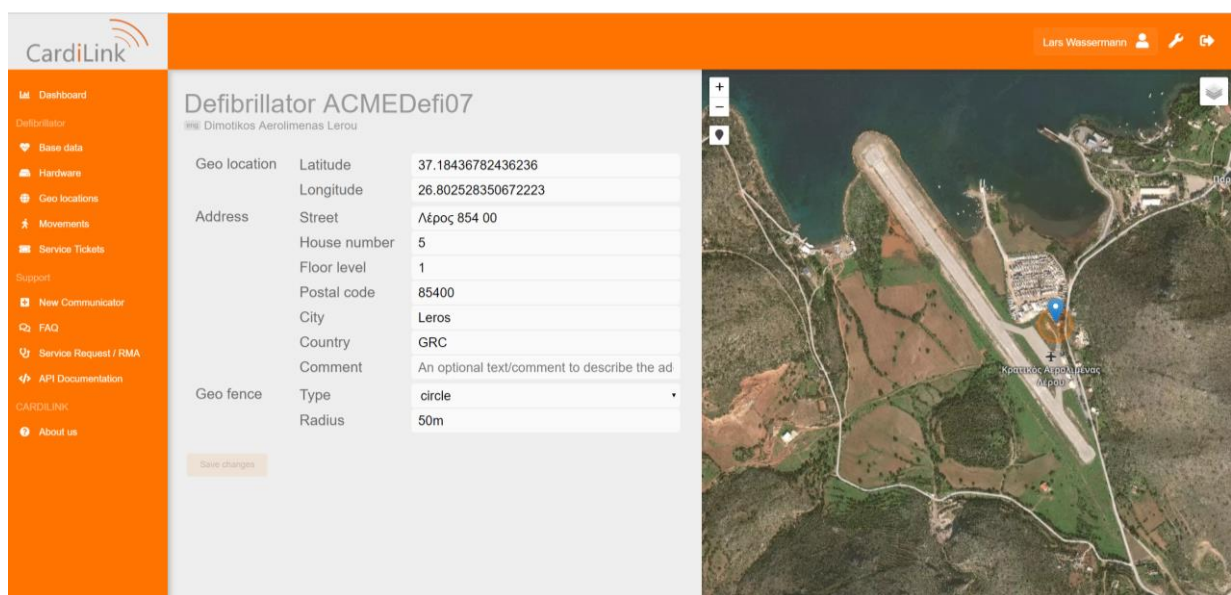
Active Postmarket Surveillance for Medical Devices

Product monitoring of not permanently surveilled devices: „Your product demands to be always in working state, but at the same time is not in regular usage. “

Save your employees time and energy with our product monitoring. We display for you the status of your devices in a dashboard in real time and we analyze your data for the long-term monitoring and quality reports. Alarms and any occurring issues will be reported to you before the product will be used with a patient. Additional benefit for you: Data Analytics of your product for clinical studies.



Postmarket Data – direct, fast and analyzed with CardiLink®. The Gateway from Medical Device to Internet of Things and Data Analytics.



Location Tracking with CardiLink®

